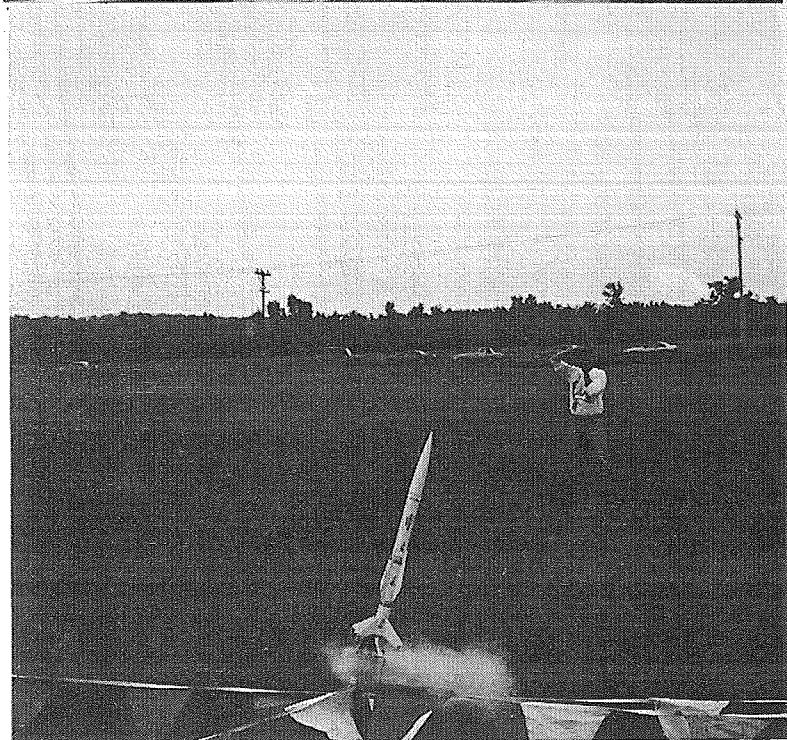
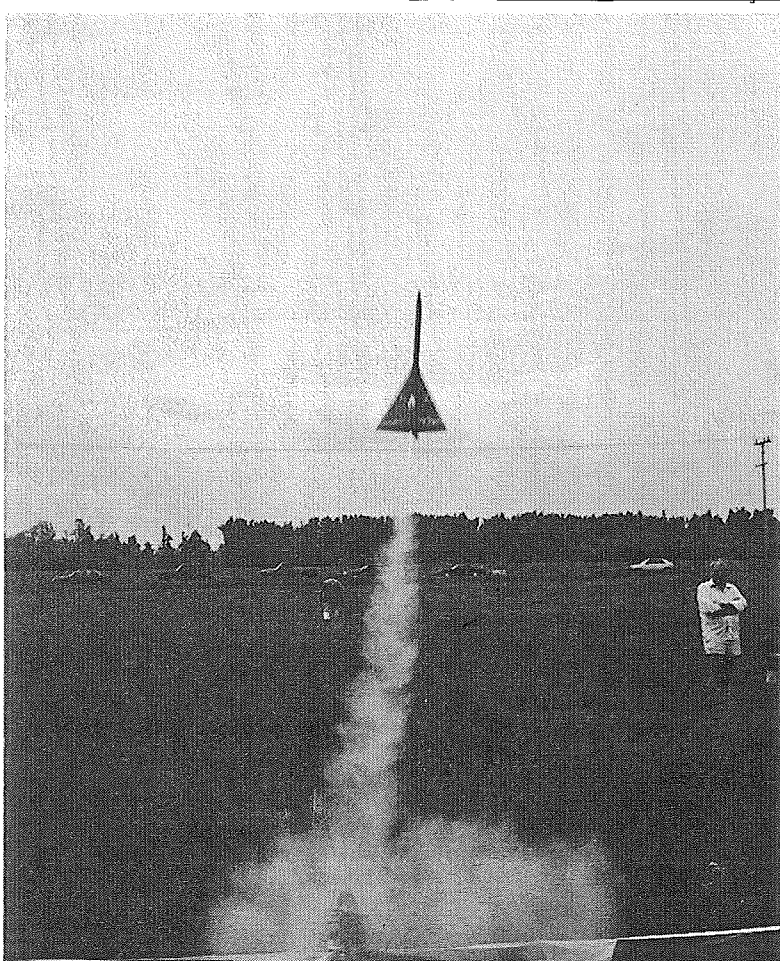
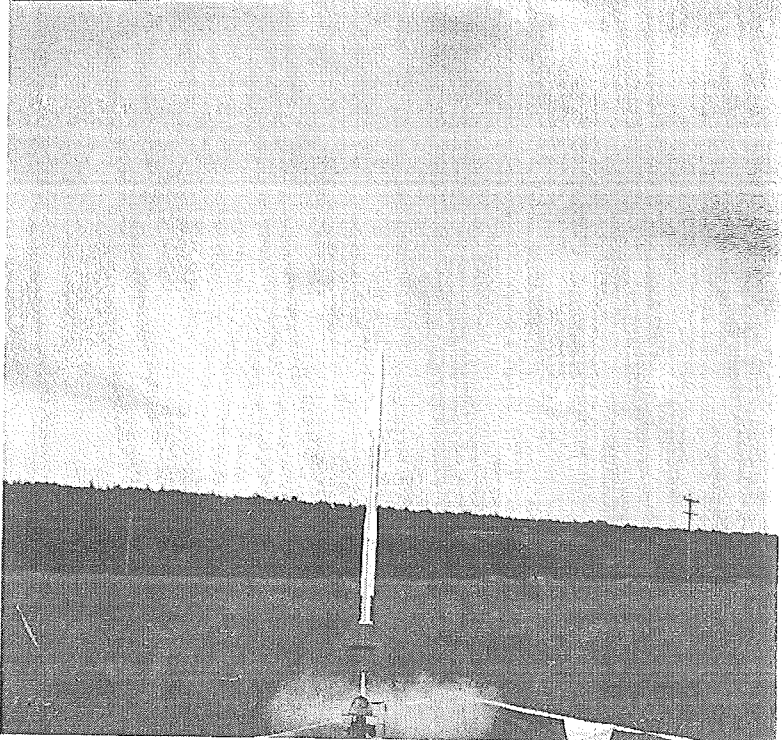
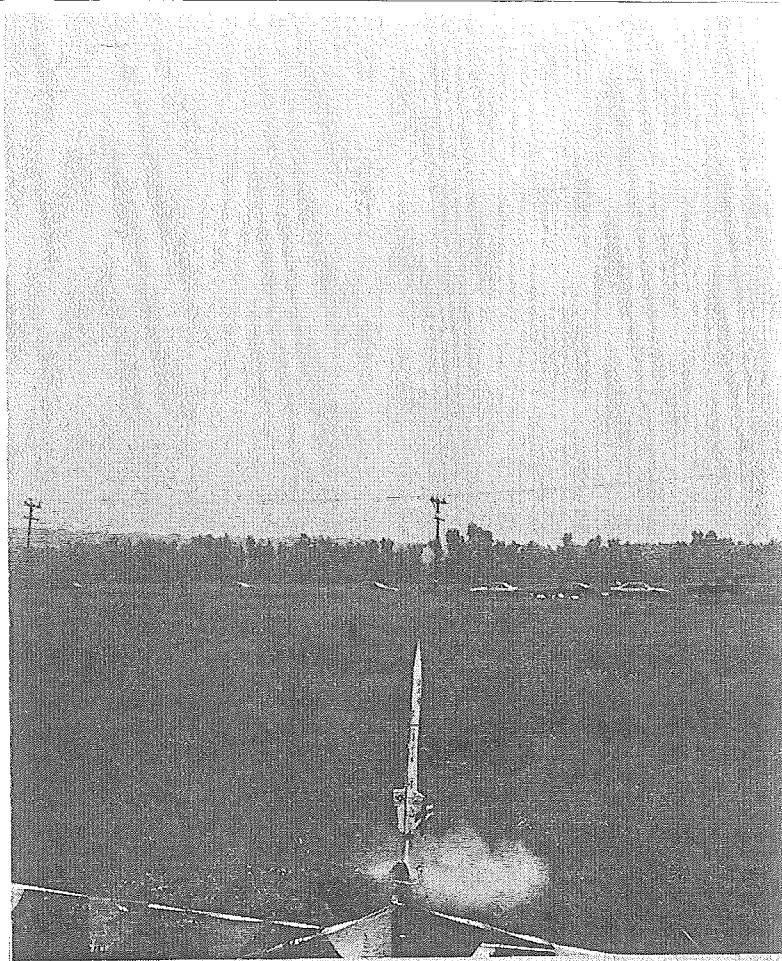


TOP: Dan Garrett prepares his
Estes Phoenix for launch.
BOTTOM: Jeff Vincent looks on as
Ferenc Roka's C Super-Roc entry,
an Apogee Longshot, clears
the tower.

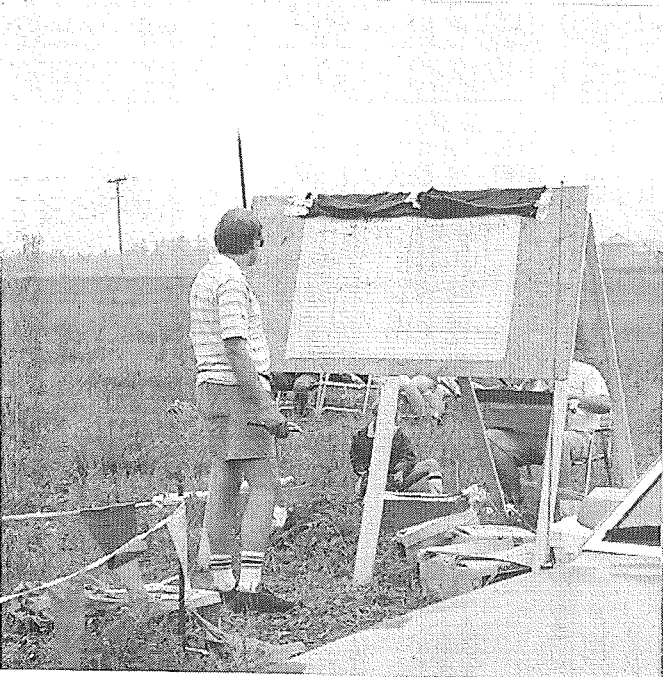
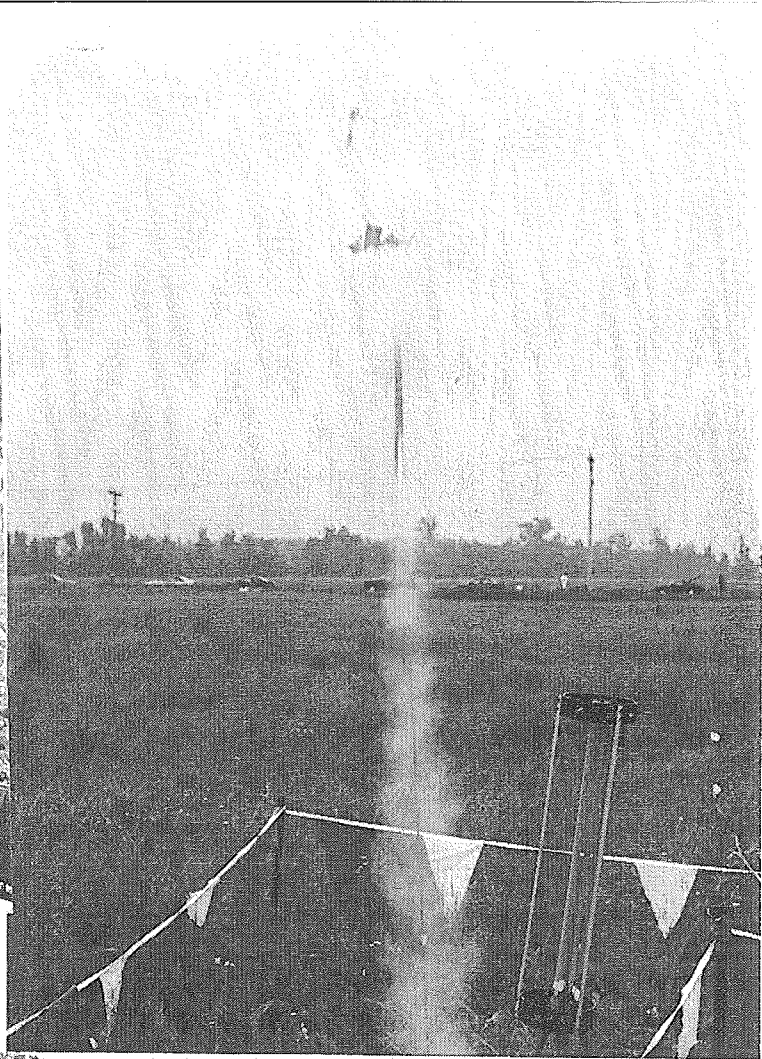
TOP: The Phoenix at liftoff under
D12 power.
BOTTOM: Jim Cost's camera rocket,
powered by an E15, heads
skyward for a shot of the
Warplane Museum grounds.



TOP: One of several vintage Estes models, flown at NYSPACE, a Delta Wedge takes to the skies. BOTTOM: Raul Jimenez' Estes Sentinel, modified for a two engine cluster, at liftoff.



TOP: Another vintage Estes model, Dan Garrett's Estes Interceptor. BOTTOM: Raul Jimenez' Estes Pathfinder on its way to a perfect flight.

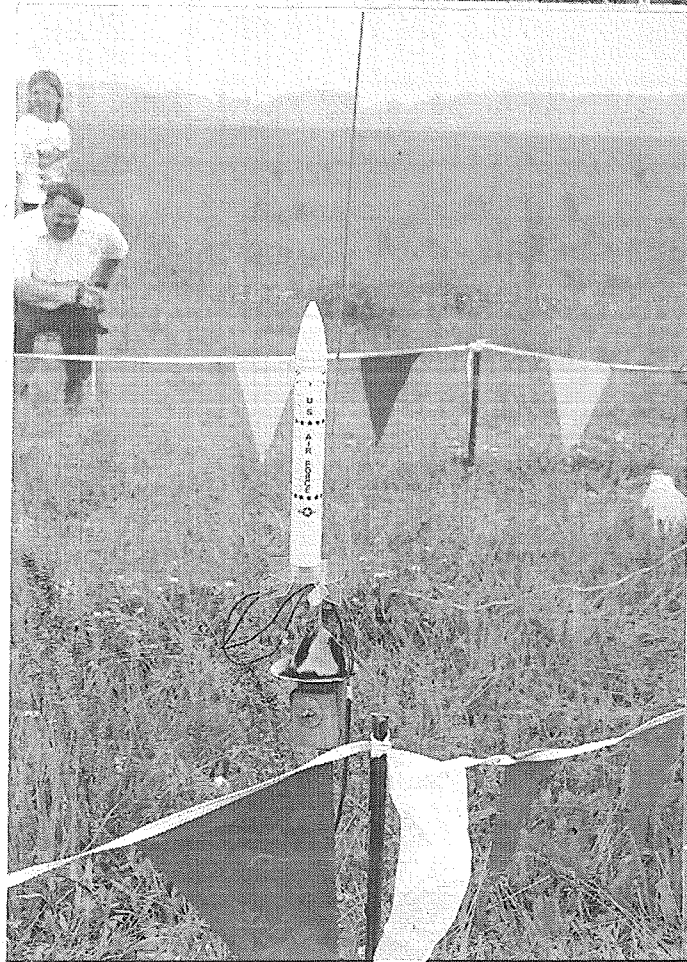
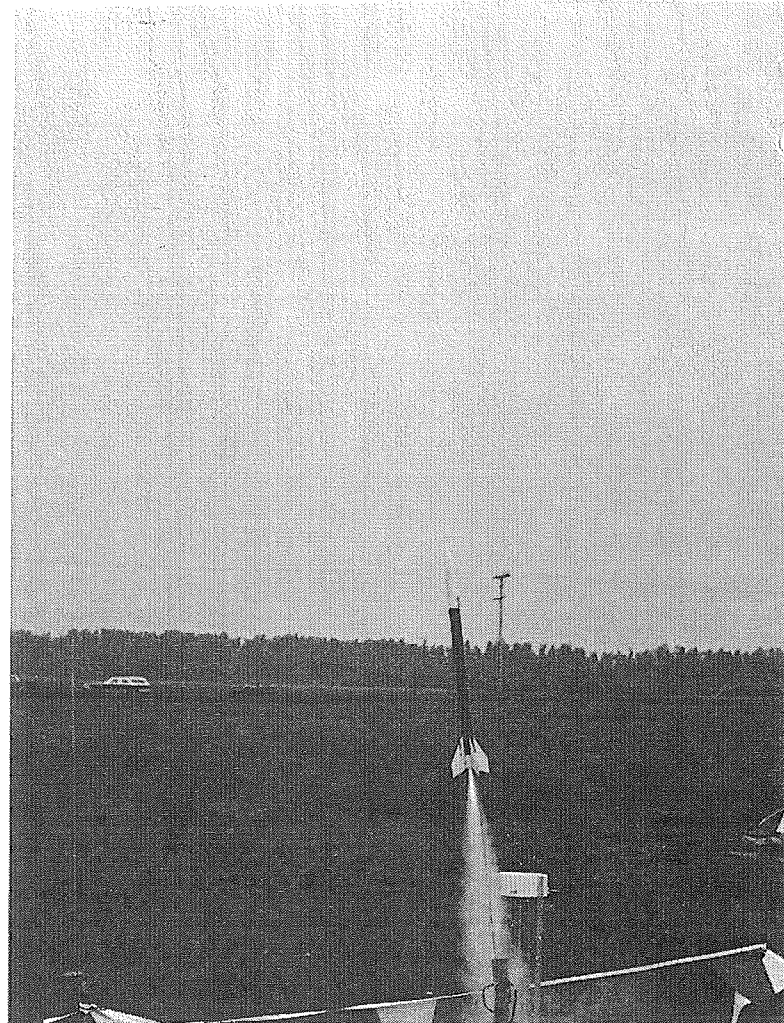
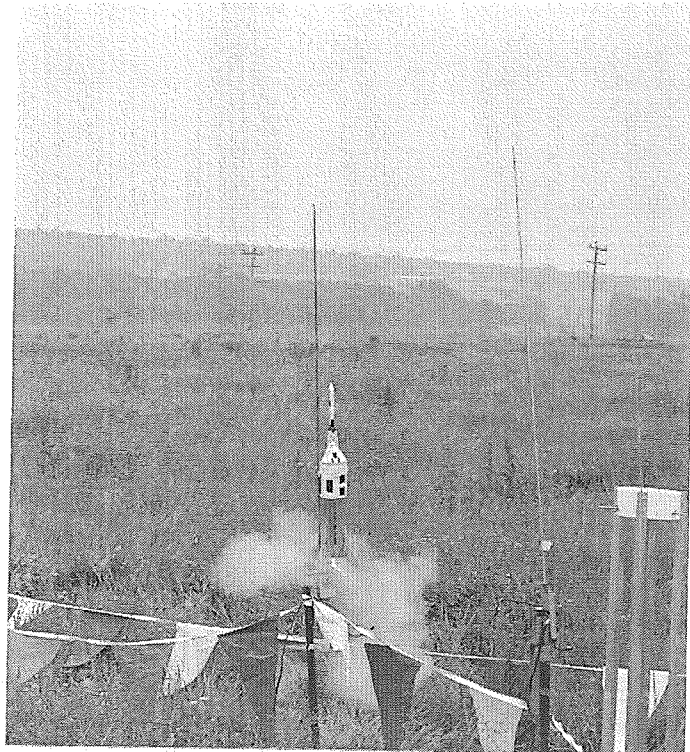


TOP: Two thirds of MARS A division, Sarah and Mary Wolf having a good time at NYSPACE 92.

BOTTOM: John DeMar checks out the standings on the results board built by Bud Piscini.

TOP: John DeMar's B/G entry captured just as the 1/4A engine catoed

BOTTOM: Bud Piscini hooks up the microclips on his nicely finished Juno I.



TOP: Dan Wolf's Little Joe II on its way to a perfect flight with a D12-3.
 BOTTOM: Ferenc Roka's Sport Scale entry, an Estes MX missile.

TOP: The DWTNBFA team's Sandhawk a liftoff.
 BOTTOM: Jeff Vincent and Chuck Hemker consider the best way to fly Ken Mizoi's Navaho.